

INDUSTRIAL AREA DUNGARPUR

SCHEDULE OF INDUSTRIAL PLOTS

TYPE	SIZE	AREA (IN SQMTR.)	NOS	SET BACK			
				FRONT	SIDE I	SIDE II	REAR
E	50.00 X 80.00	4000.00	01	6.0	3.0	3.0	3.0
F	30.00 X 65.00	1500.00	19	5.0	3.0	-	2.5
G	30.00 X 50.00	1500.00	12	5.0	3.0	-	2.5
G1	25.00 X 40.00	1000.00	15	3.0	3.0	-	1.2
H	20.00 X 35.00	700.00	37	3.0	3.0	-	1.2
TOTAL NOS OF PLOTS			83				

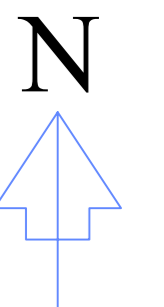
LAND USE

LAND USE	AREA IN ACRES
AREA UNDER SCHEME	37.50
AREA UNDER IND. PLOTS	25.13
AREA UNDER ROADS	7.42
AREA UNDER SERVICE	-----
AREA UNDER OPEN	NILL
AREA UNDER HILL	3.95
TOTAL	37.50

NOTE:-

NOTE:-
AS PROPOSED BY UNIT OFFICE PLOT FOR P.H.E.D MEASURING 1180.00 SQMTR HAS BEEN PLANNED MD HAS APPROVED ABOVE REVISION VIDE 50/N DT.27.04.12 IN UNIT OFFICE FILE
REVISED PORTION SHOWN THUS

MANAGER (PLANNING)



REVISED LAY OUT INDUSTRIAL OF AREA DUNGARPUR (RAJ.)

SCALE : 1cm=20.0mt.	DRG.NO.	IP&1/ 773/79 DT.18-9-1979
-- sd -- S.R VERMA DRAUGHTSMAN	REV. I	IPI/216/92 DT.31-10-1992
	REV. II	IPI/242/93 DT. 9-3-1993
	REV. III	IPI/1235/95 DT. 18-1-1995
-- sd -- B.S PARIHAR PLANNING ASSTT.	REV. III	IPI/811/12 DT. 7-5-2012

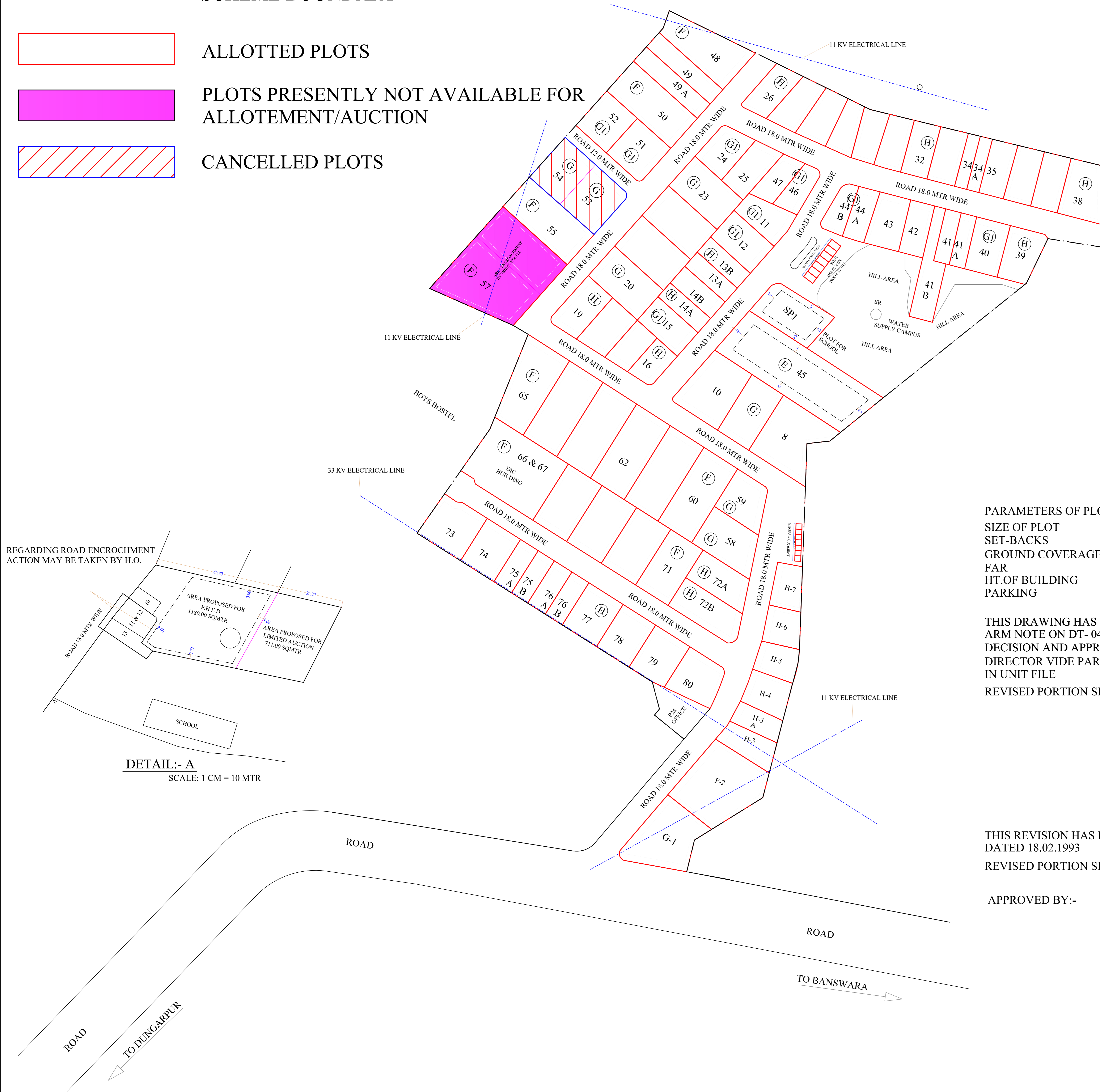
RIICO

----- SCHEME BOUNDARY

ALLOTTED PLOTS

PLOTS PRESENTLY NOT AVAILABLE FOR ALLOTMENT/AUCTION

CANCELLED PLOTS



PARAMETERS OF PLOT NO.SP-1(SCHOOL)
 SIZE OF PLOT 30 M X 50 M = 1500 SQMT
 SET-BACKS AS SHOWN IN PLAN
 GROUND COVERAGE 35%
 FAR 1.00
 HT.OF BUILDING 12.00 MTR
 PARKING 1- ESC/175 SQM OF TOTAL FLOOR AREA

THIS DRAWING HAS BEEN REVISED AS PER ARM NOTE ON DT- 04.01.03 IN PERSUANCE OF IDC DECISION AND APPROVED BY MANAGING DIRECTOR VIDE PARA NO.72/N ON DATED 17.01.2003 IN UNIT FILE

REVISED PORTION SHOWN THUS

DY.TOWN PLANNER

THIS REVISION HAS BEEN MADE AS PER R.M. LATTER DATED 18.02.1993

REVISED PORTION SHOWN THUS

APPROVED BY:-

HAMANT MURDIA
DY.TOWN PLANNER

TERACE BY

M.L Sharma
Sr.Draughtsman

REGARDING ROAD ENCROCHMENT ACTION MAY BE TAKEN BY H.O.

DETAIL:- A
SCALE: 1 CM = 10 MTR

