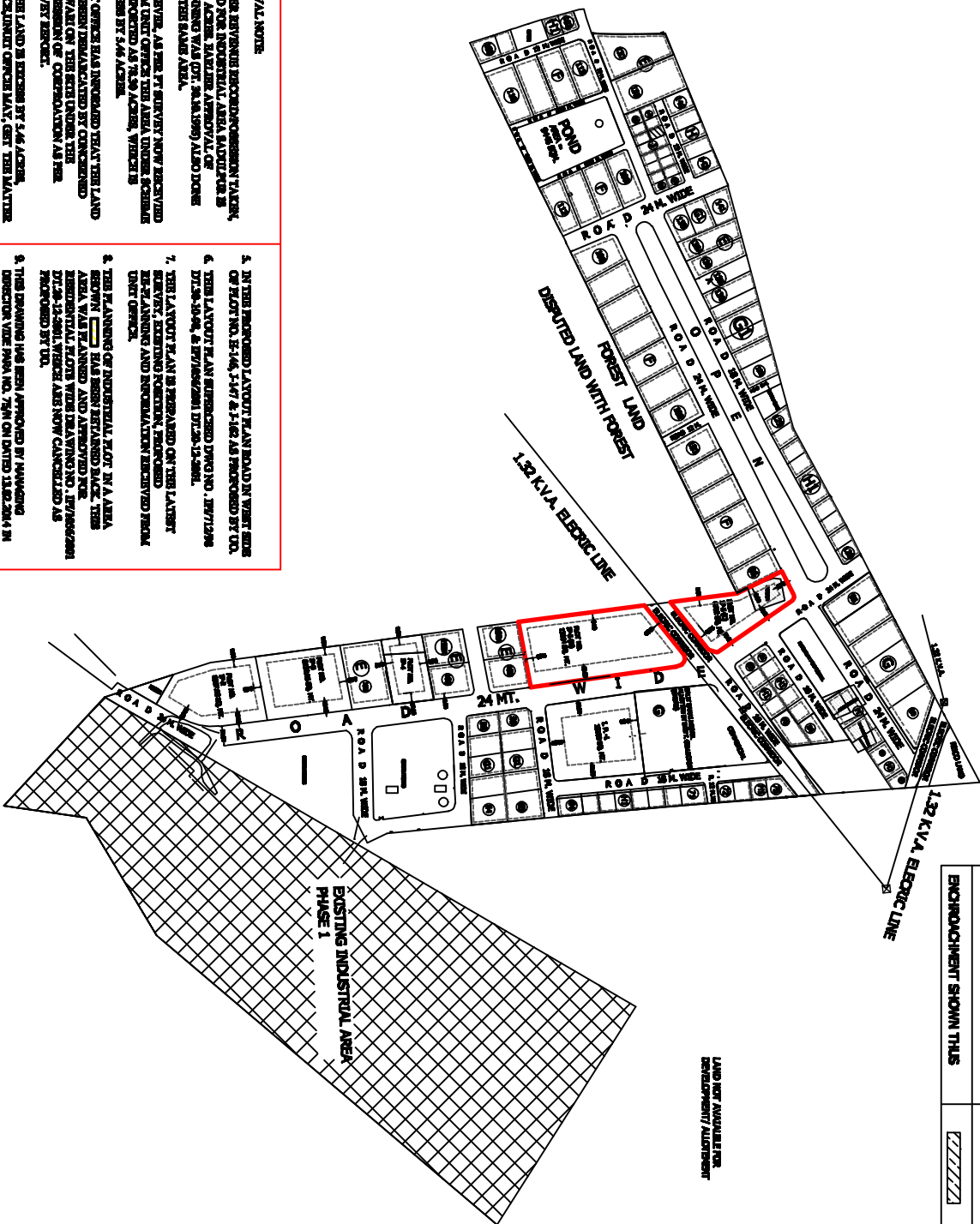


PRODUCED BY AN AUTODESK EDUCATIONAL PRODUCT



- APPROVAL NOTES:**
1. AS PER THE APPROVED PROPOSAL/AGREEMENT VALUE, LAND TO BE REDEVELOPED AREA SAULI, THE 72.5 ACRES REVERTER APPROVAL OF PLANNING AND CONTROL, ALSO DONE FOR THE SAME AREA.
  2. HOWEVER, AS PER THE CURRENTLY NOW RECEIVED FROM UNIT OFFICE THE AREA UNDER DISCUSSION IS REPORTED AS 72.50 ACRES, WHICH IS EXCESS BY 5.46 ACRES.
  3. UNIT OFFICE HAS INFORMED THAT THE LAND HAS BEEN REDEVELOPED BY CONSTRUCTION PLANNING ON THE SITE UNDER THE PROVISION OF CONSTRUCTION AS PER THE CITY REGULATIONS.
  4. AS THE LAND IS EXCESS BY 5.46 ACRES, RECONSTRUCT OFFICE MUST GET THE MATTER EXAMINED FROM REVENUE DEPTT & LAND CELL.

5. IN THE PROPOSED LAYOUT PLAN ROAD IN WEST SIDE OF PLOT NO. 5-146, 1-47 & 1-48 AS PROPOSED BY CO. DT. 20-10-94 & REVISION DT. 20-12-94.
6. THE LAYOUT PLAN PROPOSED DT. 20-12-94, 10/7/2006 & 10/7/2006.
7. THE LAYOUT PLAN IS PROPOSED ON THE LAYOUT REVERTER, EXISTING PROVISION, PROPOSED AS PLANNING AND REDEVELOPMENT REVERTER FROM UNIT OFFICE.
8. THE PLANNING OF INDUSTRIAL ZONE IN A AREA BEHIND [ ] HAS BEEN RETAINED SINCE THIS AREA WAS PLANNED AND APPROVED FOR REDEVELOPMENT UNDER THE PROVISION OF DT. 20-10-94 & REVISION DT. 20-12-94 AS NOW CANCELLED AS PROPOSED BY CO.
9. THE DRAWING HAS BEEN APPROVED BY MANAGING DIRECTOR VIDE PARA NO. 791 ON DATED 11.02.2014 IN UNIT OFFICE FILE.

DALIT SWAMI HOSTEL SHOWN THIS	
ENCROACHMENT SHOWN THIS	

**SCHEDULE OF PLOTS**

TYPE	SIZE	AREA IN SQ. M.	NO.	FRONT SETBACK	DEPTH	WIDTH	NO.
E	REARWARD	400.00	00	6.00M	3.00M	3.00M	3.00M
F	REARWARD	300.00	21	2.00M	2.00M	2.00M	2.00M
G	REARWARD	300.00	05	2.00M	2.00M	-	2.00M
G1	REARWARD	300.00	10	3.00M	3.00M	-	3.00M
H	REARWARD	700.00	00	2.00M	2.00M	-	2.00M
H1	REARWARD	900.00	00	3.00M	3.00M	-	3.00M
I	REARWARD	300.00	10	3.00M	3.00M	-	3.00M
P-1	AS PER SITE	300.00	01	12.00M	3.00M	3.00M	3.00M
P-2	AS PER SITE	600.00	01	15.00M	3.00M	3.00M	3.00M
P-3	AS PER SITE	600.00	01	15.00M	3.00M	3.00M	3.00M
P-4	AS PER SITE	600.00	01	15.00M	3.00M	3.00M	3.00M
P-4(C)	AS PER SITE	600.00	01	15.00M	3.00M	3.00M	3.00M
P-4(D)	AS PER SITE	300.00	01	15.00M	3.00M	3.00M	3.00M
<b>TOTAL PLOTS</b>			<b>120</b>				

**LAND USE**

AREA	OWNER	SCOPE	7.00 ACRES
*	*	INDUSTRIAL PLOTS	32.00 ACRES
*	*	ROADS	20.00 ACRES
*	*	SERVICES	0.77 ACRES
*	*	OPEN	3.26 ACRES
*	*	COMMERCIAL	1.00 ACRES
*	*	RESERVED (GREEN)	2.11 ACRES
*	*	RESERVED (OPEN)	12.81 ACRES

**NOTE :-**  
 BUILDING PARAMETERS FOR PROPOSED INDUSTRIAL PLOTS OF AS PER MODEL BUILDING BY LAWS 2010 (REVISED) FOR LOTS THREE ONE (A) TO FIVE AFTER LETTER OFFICE ORDER (52/2010) DATED: 11-09-2013

**REVISED LAY OUT PLAN OF INDUSTRIAL AREA SADULPUR, DISTT - CHURU, RAJ.**

SCALE : 1 cm = 40.00 mt. [DIA. NO. DT/90/2014, DT. 13-02-2014]

DESIGNED BY: [Name]

DRAWN BY: [Name]

CHECKED BY: [Name]

DATE: [Date]

