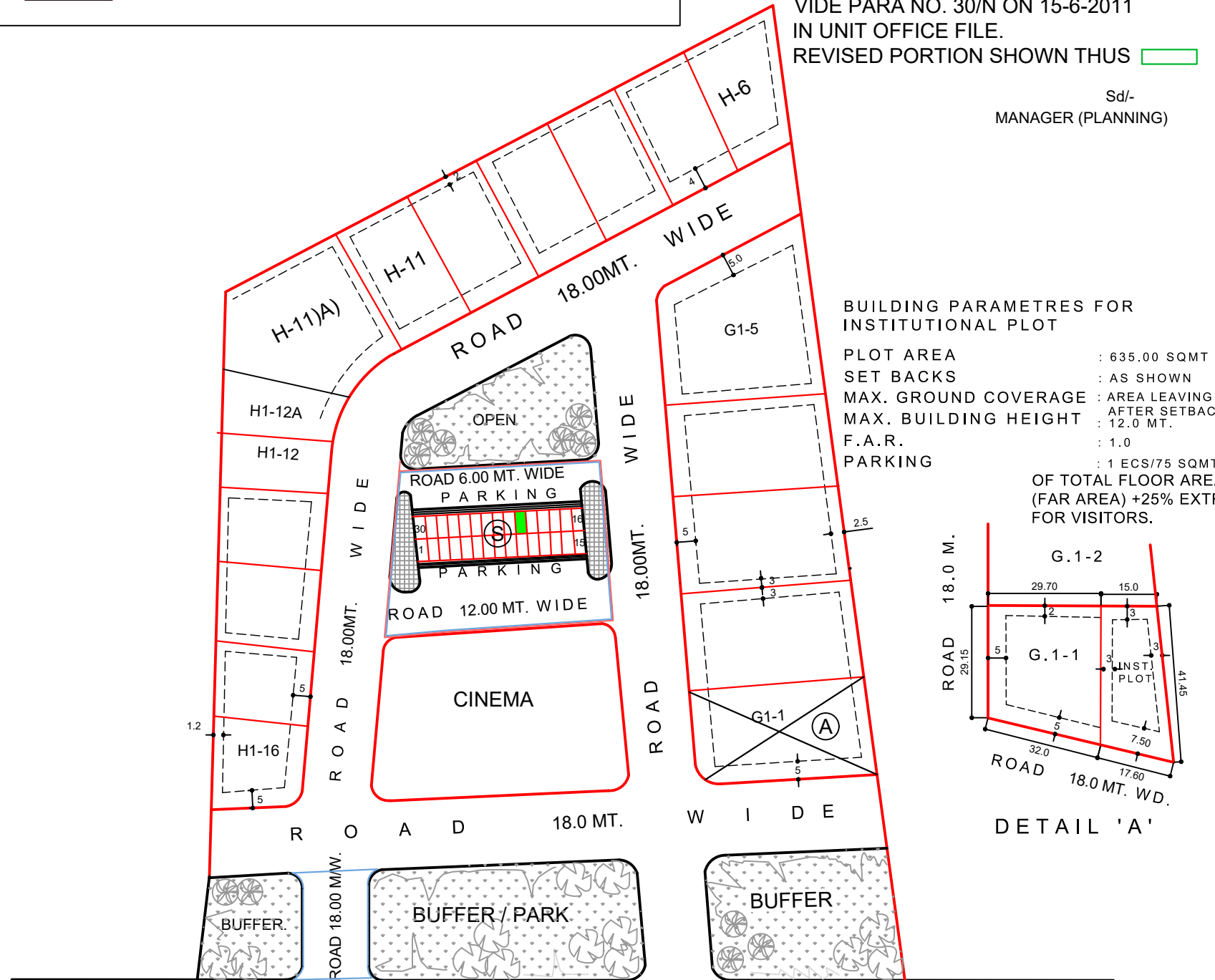


LEGENDS

- CLEAR VACANT PLOTS
- PLOTS UNDER TEMPORARY ENCROACHMENT
- PLOTS UNDER ENCROACHMENT /DISPUTE

NOTE:
 AS PROPOSED BY UNIT OFFICE, INSTITUTIONAL PLOT HAS BEEN PLANNED IN PLACE OF COMMERCIAL PLOT AS INFORMED BY UO. M.D. HAS APPROVED THE ABOVE REVISION IN THE PLANNING VIDE PARA NO. 30/N ON 15-6-2011 IN UNIT OFFICE FILE.
 REVISED PORTION SHOWN THUS

Sd/-
 MANAGER (PLANNING)



SCHEDULE OF PLOTS

TYPE	SIZE IN METER	AREA IN SQ.MT.	NO.	SET BACKS			
				F	S1	S2	REAR
G1	25.00x40.00	1000.00	5	5	3	-	2.5
H	20.00x35.00	700.00	6	4	3	-	2
H1	20.00x25.00	500.00	6	3	3	-	1.2

SCHEDULE OF SHOP

TYPE	SIZE	AREA	NO.	REMARKS
S	3.00x7.50	22.5 SQ.M	30	INCL. 1.5 MT. WIDE PLATFORM.

LAND USE

AREA UNDER SCHEME	9.25 ACRES
AREA " IND. PLOT	3.82 "
" " ROAD	2.78 "
" " COMMERCIAL	.37 "
" " CINEMA	.73 "
" " OPEN	.31 "
" " BUFFER	1.24 "

NOTE

- THIS DRAWING HAS BEEN SUPERCEDED ON DRAWING No. IPI/965/2000 DT. 24-10-2000.
- THIS LAYOUT PLAN HAS BEEN PREPARED ON THE SURVEY RECEIVED FROM UNIT OFFICE.
- THIS COMMERCIAL SHOPS PLANNED BY HEAD OFFICE THE AREA SHOWN THUS
- THIS REVISION HAS BEEN DONE BY KEEPING THE AREA OF LAND IN OPEN AS PER ORIGINAL.
- THIS DRAWING HAS BEEN APPROVED BY CMD VIDE PARA 59/N ON DATED 9-12-2001 AS PER SR. RM NOTE ON DATED 6-12-2001 IN SECTION FILE.

NOTE

- * THIS REVISION HAS BEEN APPROVED BY MD VIDE PARA 77/N ON DATED 1-2-2002 IN SECTION FILE ASPER SR. RM NOTE ON DATED 15-01-2002.

* REVISED PORTION SHOWN THUS.

Sd/-
 DY. TOWN PLANNER.

EXISTING LAY OUT PLAN OF INDUSTRIAL AREA.FATEHPUR DISTT. SIKAR.

SCALE:- 1CM = 10MT.	DRG. NO.	IPI/1044/2001 DT. 13-12-2001
Sd/- VISHAL MATHUR DRAUGHTSMAN	REV I REV II	IPI/104/2002 DT. 4-2-2002 IPI/764/2011 DT. 21.7.11
Sd/- SANJAY M. WAGHMARE ASSTT. TOWN PLANNER.		
Sd/- PARVEEN JAIN DY. TOWN PLANNER		

